

# Welcome!!!

# 歡迎光臨



**Ejee Pressing Dies Industry Co., Ltd**  
宜捷工業股份有限公司

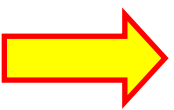


EJEE  
PRESSING  
DIES INDUSTRY

# Location



**EJEE**



# Company profile

---

\*Chairman : Kao-An Liu

---

\*Employees : 133 persons

---

\*Product : ★Manufacturing of Stamping Dies

---

\*Main Customer : ◆KuoZui(TWN Toyota), TAB(Toyota Japan),  
FCA(Fiat&Chrysler), GM(USA)  
Maruti Suzuki(India), Suzuki Indonesia  
Tower(USA), Tower(Euro), Gestamp (NA&Spain), L&W(USA)

---

\*Address : No. 679, An Jiau Road, Yen Chao District,  
Kaohsiung city 824 , Taiwan, R.O.C.

---

\*Contact Person : Pascal Chen (Vice President) & Charles Yang ( Sec. Director)

---

\*TEL·FAX : TEL :+886-7-6166321 EXT 608  
FAX:+886-7-6166323

---

# Company History

- Aug. 1988 "Ejee Pressing Dies Industry Co., Ltd" was formally established
- Aug. 1989 Began to provide dies to Japan "UMIX Co., Ltd." and exported dies to countries such as Japan and Southeast Asia
- Sep. 1990 Expansion of the plant area and purchased Japan KOMATZ CNC machine to accelerate the automation of the machining
- Sep. 1991 Became the main supplier to China Motor Company" in Taiwan
- Dec. 1996 Began to provide dies to "Kuozui " and exported the des to Japan SANKYO, HOSOKAWA
- Mar. 1998 8000m2 new plant extension
- Nov. 1999 Accredited with ISO 9002 quality certification; Installed 1500Tons Hydraulic Press
- Aug. 2002 Accredited with **ISO 9001 quality certification**
- Jan. 2003 **Implementing 3D design**; Began to build dies for MARUTI SUZUKI INDIA
- Mar. 2005 **Installed 1200tons Mechanical Press**
- Aug. 2005 **Invest KANAGATA GROUP DEVELOP CO.,LTD** (Transfers the investment to china and establish SHUNDE KANAGATA GROUP DEVELOP CO.,LTD)
- May 2007 Installed 500tons Mechanical Press
- Oct. 2008 Accredited with **ISO 14000 environmental management certification**
- May.2009 Installed **3D Coordinate measuring machine with laser Scanning System** at Measuring trokes :2500\*5000\*1800mm
- Sep. 2009 Approved to become the formal member of Taiwan Toyota (Kuozui) supplier chain
- Oct. 2010 Purchase the laser cut machine
- Mar. 2013 Install VMC-AA PROCESSING MACHINE
- Jun. 2013 Installed Gantry 5 Face High-Speed Milling
- Jul. 2014 Install **2400T Mega Serve Press**
- Sep. 2014 Purchase Gantry 5 Face High-Speed Milling Machine 3 sets
- Dec. 2015 New Press line install

# [2]、EJEE Plant Introduction

## Press Introduction

### 1. Mechanical Press

		2400 Ton	1200 Ton	500 Ton	2400 Ton
1	MAKER	TWN LCM	TWN HLS	JPN KOMATSU	TWN LCM
2	NORM. MODEL HEIGHT	1600	1460	1100	1500
3	BOLSTER SIZE	5000*2500	4600*2500	3000*2000	5000*2500
4	SLIDER STROKE	800	800	600	800
5	SLIDER ADJUSTMENT	600	600	600	600
6	SPM	300	18	20	24
7	CUSHION STROKE	300	280	300	300



## 2. Hydraulic Press

		1500TON	1000 TON	1000TON	600TON	600TON	350TON	250TON
1	MAKER	TWN HLS	TWN LCM	TWN HLS	TWN FengYu	TWN FengYu	TWN FengYu	TWN HLS
2	NORM. MODEL HEIGHT	2300	1600	2100	1800	1600	1700	2300
3	BOLSTER SIZE	4600*2400	5000*2500	3600*2400	3000*2000	2500*2000	3000*2000	2500*2000
4	SLIDER STROKE	1900	1600	1800	1600	1400	1500	1700
5	SLIDER ADJUSTMENT	1900	X	18000	1600	1400	1500	1700
6	CUSHION ABILITY(KGF/CM2)	400	X	400	250	200	NONE	NONE
7	CUSHION STROKE	400	X	400	285	400	NONE	NONE
8	OPEN HEIGHT	2300	2200	2100	1800	1600	1700	2300



# New Press Line Layout:

2400T Mechanical Serve Press X1 set Table Size 5MX2.5M

1000T High Speed Hydraulic Press X3 sets Table Size 5MX2.5M



# CNC Machine Specification ~ ①

## MG530Z2 Gantry 5 Face Milling



D/P	Q'ty	Specification
WELE MG 530Z2	2	Controller: FANUC 31iMB
		Size: 5000 X 2800
		RPM: 6000
		Feedrate: 10000 mm/Min
		Load capacity: 25 Ton
		Stroke: X 5000mm Y 3000mm Z 1000mm W 3800mm

## LB-325Z Vertical High-Speed Milling



D/P	Q'ty	Specification
WELE LB 325Z	1	Controller: FANUC 31iMB
		Size: 3000 X 2400
		RPM: 6000
		Feedrate: 24000 mm/Min
		Load capacity: 12Ton
		Stroke: X 3060mm Y 2550mm Z 1000mm



# CNC Machine Specification ~ ②

## MG530 Gantry 5 Face High-Speed Milling



D/P	Q'ty	Specification
WELE MG 530	1	Controller: MAS 403P50T-1
		Size: 5000 X 2800
		RPM: 12000
		Feedrate: 10000 mm/Min
		Load capacity: 67 Ton
		Stroke: X 5000mm Y 3000mm Z 1000mm W 3800mm

## VMC-AA PROCESSING MACHINE



D/P	Q'ty	Specification
WELE AA 965	2	Controller: FANUC 0iMD
		Size: 1100 X 650
		RPM: 8000 / 10000
		Feedrate: 24/24/20 m/min
		Load capacity: 7 Ton
		Stroke: X 900mm Y 650mm Z 600mm W 650mm

# CNC Machine Specification ~ ③

## LG5030 Gantry 5 Face High-Speed Milling



D/P	Q'ty	Specification
AWEA LG5030 Gantry High Speed Machine	1	Controller: FANUC SERIES 18-M
		Size: <b>5000 X 3000</b>
		RPM: 8000
		Feedrate: 5000 mm/Min
		Load capacity: 25Ton
		Stroke: X 5000mm Y 3000mm Z 1400mm W 5000mm

## LG4030 Gantry 5 Face High-Speed Milling



D/P	Q'ty	Specification
AWEA LG4030 Gantry High Speed Machine	1	Controller: FANUC SERIES 18-I
		Size: 4000 X 3000
		RPM: 8000
		Feedrate: 5000 mm/Min
		Load capacity: 25Ton
		Stroke: X 4600mm Y 3000mm Z 1400mm W 4000mm

# CNC Machine Specification ~ ④

## SP3016 Vertical Milling



D/P	Q'ty	Specification
AWEA SP3016 (Machine Center)	1	Controller: FANUC SERIES O-M
		Size: 3000 X 1600
		RPM: 3200
		Feedrate: 5000 mm/Min
		Load capacity: 10Ton
		Stroke: X 3000mm Y 1600mm Z 750mm W 3000mm

## LP 3021 Vertical High-Speed Milling



D/P	Q'ty	Specification
AWEA LP3021 (Machine Center)	1	Controller: FANUC SERIES 18-M
		Size: 3000 X 2100
		RPM: 6000
		Feedrate: 5000 mm/Min
		Load capacity: 20Ton
		Stroke: X 3000mm Y 2100mm Z 1200mm W 3000mm

# CNC Machine Specification ~ ⑤

## 11KM Vertical Milling



D/P	Q'ty	Specification
SEKI 11KM (Machine Center)	1	Controller: FANUC SERIES 15-M
		Size: 4000 X 2000
		RPM: 4000
		Feedrate: 3000 mm/Min
		Load capacity: 15Ton
		Stroke: X 4000mm Y 2000mm Z 1200mm W 4000mm

## LG4630 Gantry 5 Face High-Speed Milling



D/P	Q'ty	Specification
AWEA LG4630 (Machine Center)	1	Controller: FANUC SERIES 18-I
		Size: 4600 x 2000
		RPM: 8000
		Feedrate: 5000 mm/Min
		Load capacity: 25Ton
		Stroke: X 4600mm Y 3000mm Z 1400mm W 4600mm

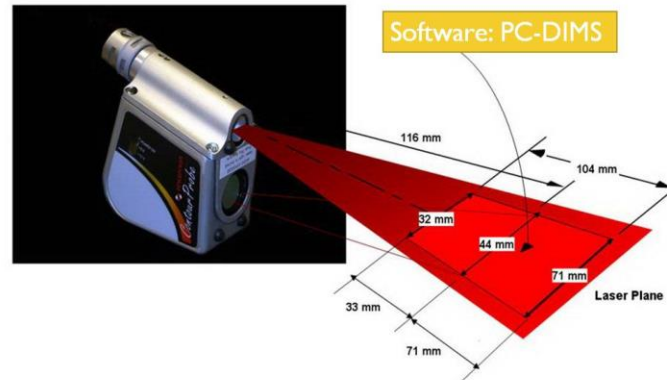
# CMM Machine Specification

## DEA 3D Coordinate Measuring Machine Included 3D Laser Scanning System



D/P	Q'ty	Specification
ALPHA IMAGE 25.50.18	1	Measuring Strokes: <b>2500*5000*1800(mm)</b>
		<b>Software: PC-DIMS</b>
		<b>ScanShark V4i 3D Laser Scanning System</b>

**DEA 3D CMM (Measuring Machine ALPHA IMAGE) +  
ScanWorks V4i 扫描系统 (Laser Scanning System)**



# CAD/CAM Equipment Specification

## •2D Die Design

Software Name	Hardware Spec.	Receivable Data	Q'ty	Implement Time	Purpose
AUTO CAD 2008 AUTO CAD 2006 AUTO CAD 2000 LT	E5410 16GB RAM	DWG 、 DXF	8	2008	2D CAD

## •3D Die Design :

Software Name	Hardware Spec.	Receivable Data	Q'ty	Implement Time	Purpose
VAMOS V5.8.5 + CATIA V5R24	HP XW8600 Workstation 16GB RAM	IGS 、 STEP 、 CATparts	3	2006	3D CAD
CATIA V5R24	HP XW4300 Workstation 8GB RAM	IGS 、 STEP 、 CATparts	6	2006	3D CAD
PRO/E WF2.0	HP XW4300 Workstation 8GB RAM	IGS 、 STEP 、 pro/e-prt	1	2005	3D CAD

Software Name	Hardware Spec.	Receivable Data	Q'ty	Implement Time	Purpose
NX 9.0 (UG )	HP XW8600 Workstation 16GB RAM	IGS 、 STEP 、 CATparts.PRT	2	2011	modeling
Autodesk Inventor- 2011	HP XW8600 Workstation 16GB RAM	X_T.MODEL	1	2011	modeling

**-NC Program :**

Software Name	Hardware Spec.	Receivable Data	Q'ty	Implement Time	Purpose
CATIA V5R24	HP XW8600 Workstation 16GB RAM	IGS 、 STEP 、 CATparts	3	2006	modeling
TEBIS V3.5R8	E5300 2.6G (2048MB RAM) 512MB VGA CARD	IGS	3	2000	Modeling NC program
MASTER CAM	P4 2.6G (1024MB RAM) 128MB VGA CARD	IGS	2	2002	NC program

**-CAE Program :**

Software Name	Hardware Spec.	Receivable Data	Q'ty	Implement Time	Purpose
PAMSTAMP 2012	X9650 3.0G (4096MB RAM)	IGS 、 STL	1	2004	CAE
AUTOFORM R5.2		IGS	1	2014	CAE

# CUSTOMERS



- 广汽丰田 GUANGZHOU TOYOTA
- 东南汽车 SOUEASE MOTOR CO.
- 江铃控股 JIANGLING MOTOR CO.
- 本田生产技术 HONDA EGCH
- 美国通用 GM
- 一汽海马 HAIMA
- 长城汽车 GREAT WALL AUTO

- 一汽丰田 FAW TOYOTA
- 广州丰铁 GTAP
- 印度MARUTI
- 柳州广菱 HIROTEC
- 美国克莱斯勒CHRYSLER
- 佛山东普雷 TOPRE





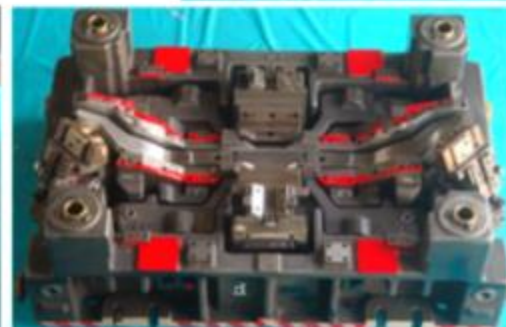
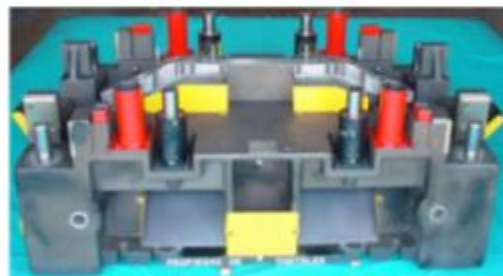


To get to know EJEE's actual working experiences, please refer to following pages

# USA FIAT 500 - in 2009

RAIL FRONT REAR RT/LT

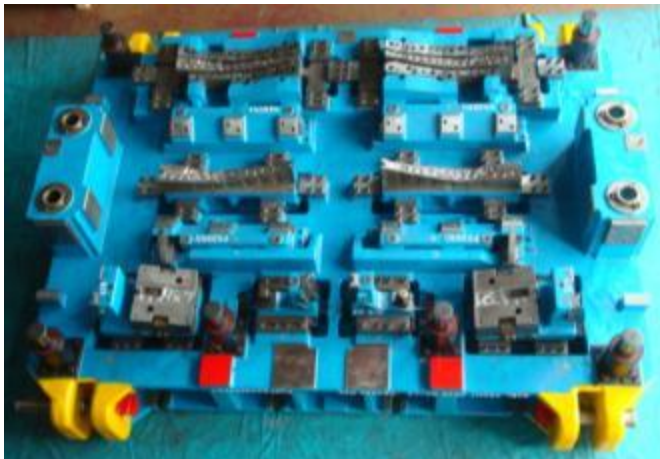
*DP 590 material*



# Gestamp NA P1LL - in 2011



HINGE PILLAR



B Pillar Rief

TWB MATERIAL

# Gestamp NA GM SUV - in 2011



1. RAIL F/CMPT UPR OTR  
SI LH/RH
2. BAR F/END UPR  
CTR TIE FRT (UPR)



*DP 590 material*

Rear Rail  
Upper RH/LH



Rear Rail  
Front R/L



Rear Rail  
Lower RH/LH





OP20



OP30



OP40

## Rear Rail Front RT / LT



OP50



OP60

# Tower Chrysler – KL – 2012

## Rear Rail Lower RT / LT



OP20



OP50



OP30



OP40



OP70

# Tower Chrysler – KL – 2012



OP20



OP50



OP30



OP60



OP40



OP70

**Rear Rail Upper RT / LT**





OP20



OP30



OP40



OP50



LH



RH

# Tower Chrysler – UF Sunroof (599) – 2013



OP20



OP50

# In 2014, Tower EU – SKODA SK48



**Bumper beam frt  
RT / LT  
DP1000**

# In 2014, Tower EU – SKODA SK48



**Bumper beam rear  
RT / LT  
DP1000**

# In 2014, Tower EU – SKODA SK48

φ10



φ20



φ30



φ40



φ50



Scharnierverstaerkung  
hinge reinforcement  
RH/LH

# In 2003, TOYOTA -WISH (24 PARTS)

332W



# In 2005, TOYOTA - NEW CAMRY (15 PARTS)

036L

30



# In 2005, TOYOTA -YARIS (25 PARTS)

352L

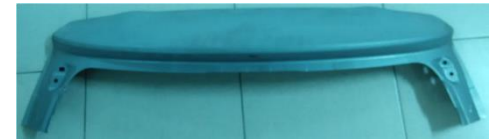




# In 2014, TOYOTA -ALTIS ( 10 PARTS)



# In 2014, TOYOTA -YARIS (6 PARTS)

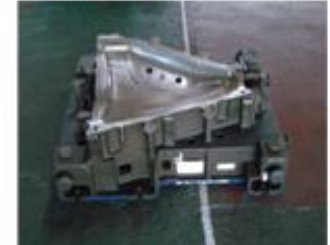


# In 2014, TOYOTA -VIOS (12 PARTS)



# Toyota – Fender – Rotary Cam

OP10



OP20



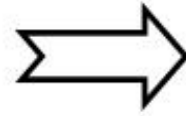
OP30



OP40



**TOYOTA IMV MODEL  
FIVE COUNTRIES**



REAR DOOR INR



# TAB: PANNEL FRONT FLOOR

**OP10**



**OP20**



**OP30**

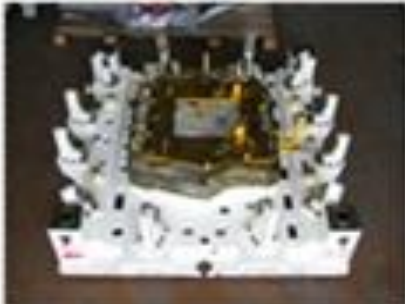


**OP40**

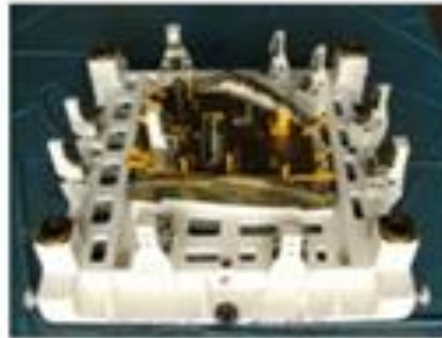


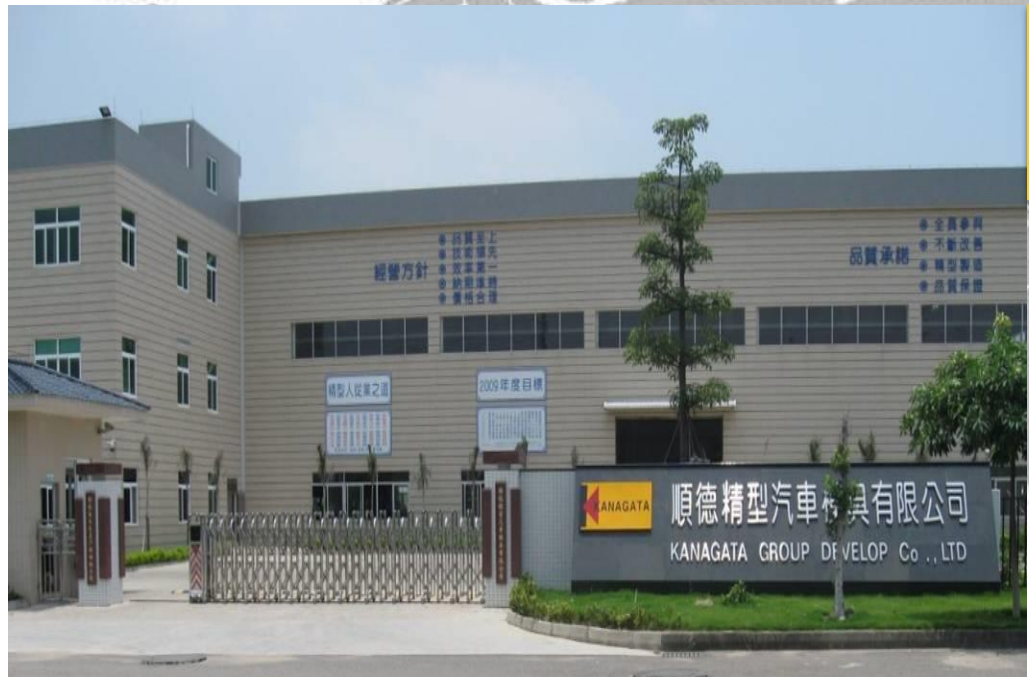
## HEMMING DIE 包邊模

BACK DOOR-INDIA MARUTI



REAR DOOR-INDIA MARUTI





**Year 2006  
Shunde  
China**





## Kanagata Group Develop Co., Ltd

- **Founded in : September 2006**
- **Invested Capital : 18,980,000 US Dollar**
- **Registered Capital : 10,150,000 US Dollar**
- **Land Area : 3,200 square meter**
- **Employee : 230 people**
- **Address : NO.2, Xinyao road, Daliang, Shunde, Foshan, Guangdong, China**  
**〒5 2 8 3 3 3**



	Item	Software	Description	Qty.
<b>Software</b>	CAE	PAM-STAMP 2G	France V2G	2
	NC Program	POWERMILL	Pro 9.0	3
	3D Design	CATIA	France / V5 R18	20
		UG	NX 7.5	2
	2D Design	AUTO CAD	U.S.A / V2007	23

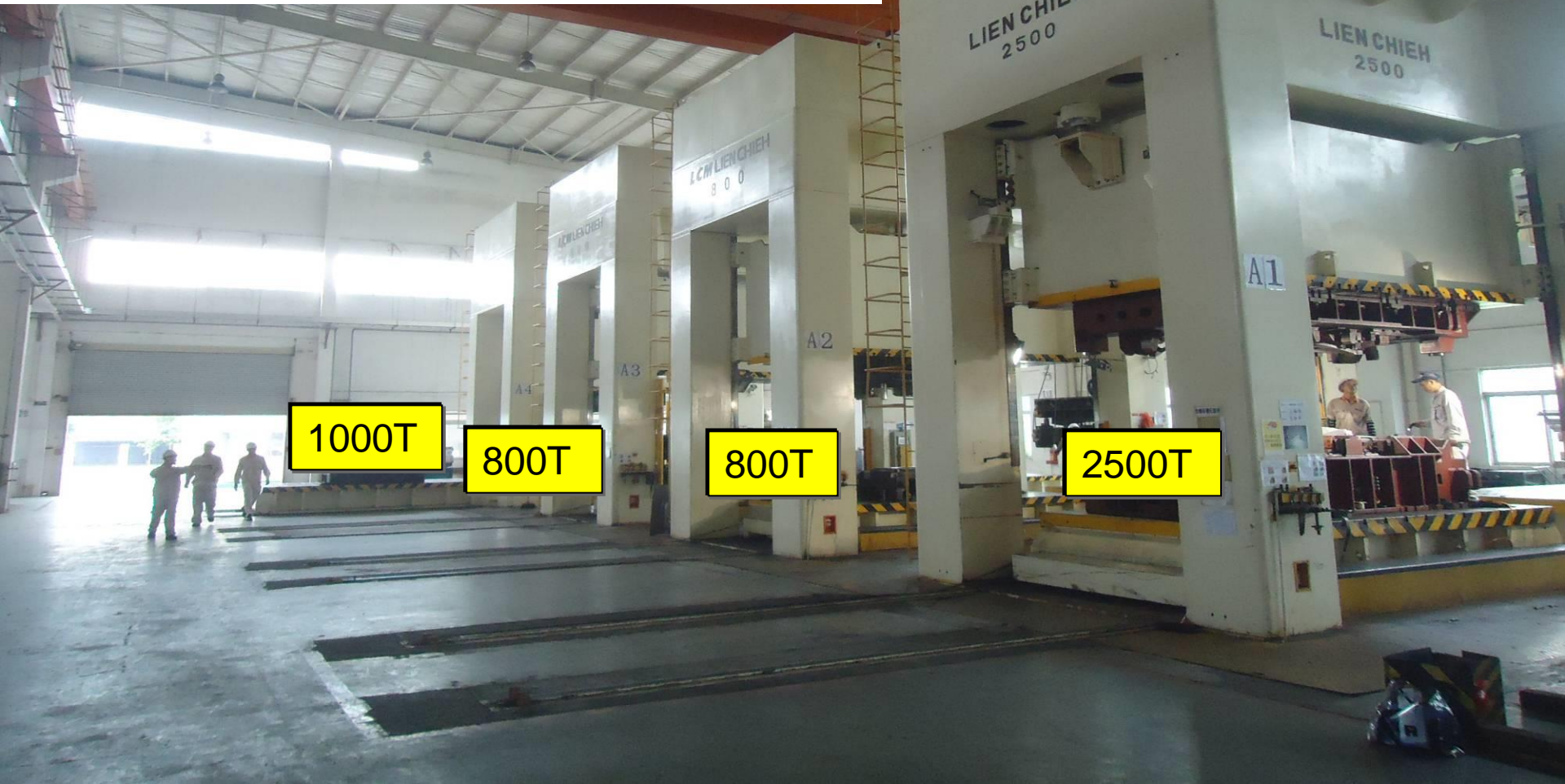
Item	Supplier	Standard	Quantity
CNC Machine	Yongqin	5.5Mx2.5M	1set
	Yongqin	3.5Mx1.5M	1 set
	AWEA	3Mx2.5M	4 sets
	AWEA	5Mx3M	2 sets
	WELE	0.8Mx1.6M	2set
	WELE	5Mx3M	1 set
	Vertical drilling	HY	1600MM
Milling machine	HC	2200B	1 set
	HC	1200B	1 set
Abrader	PFG-L	3060AH	1 set
Line Cutter	SAKEY	DK7740/DK7763	2 sets

Item	Supplier	Dimension	Quantity
<b>Mechanical Press</b>	KOMATSU: 500 T	3.5MX2.2M	1 set
<b>Hydraulic Press</b>	LIEN CHIEH: 1000 T	3.5MX2.2M	1 set
<b>Hydraulic Press</b>	LIEN CHIEH: 600 T	3.5MX2.2M	3 sets
<b>Hydraulic Press (High-Speed)</b>	LIEN CHIEH: 2500 T	4.6MX2.5M	1 set
<b>Hydraulic Press (High-Speed)</b>	LIEN CHIEH: 1000 T	4.6MX2.3M	1 set
<b>Hydraulic Press (High-Speed)</b>	LIEN CHIEH: 800 T	4.6MX2.3M	2 sets



## Tandem Pressing A Line and Equipment Standard

Hydraulic Press (High-Speed)	LIEN CHIEH: 2500 T	4.6MX2.5M	1 set
Hydraulic Press (High-Speed)	LIEN CHIEH: 1000 T	4.6MX2.3M	1 set
Hydraulic Press (High-Speed)	LIEN CHIEH: 800 T	4.6MX2.3M	2 sets



# Tandem Pressing B Line and Equipment Standard

NO.	Standard	Quantity
A 1	500 T Mechanical Punch (KOMATSU) 3.5Mx2.2M	1 Set
A 2	1000 T Hydraulic Punch (LIEN CHIEH) 3.5M x 2.2M	1 Set
A 3	600 T Hydraulic Punch (LIEN CHIEH) 3.5M x 2.2M	1 Set
A 4	600 T Hydraulic Punch (LIEN CHIEH) 3.5M x 2.2M	1 Set
A 5	600 T Hydraulic Punch (LIEN CHIEH) 3.5M x 2.2M	1 Set



***Thank you !!***